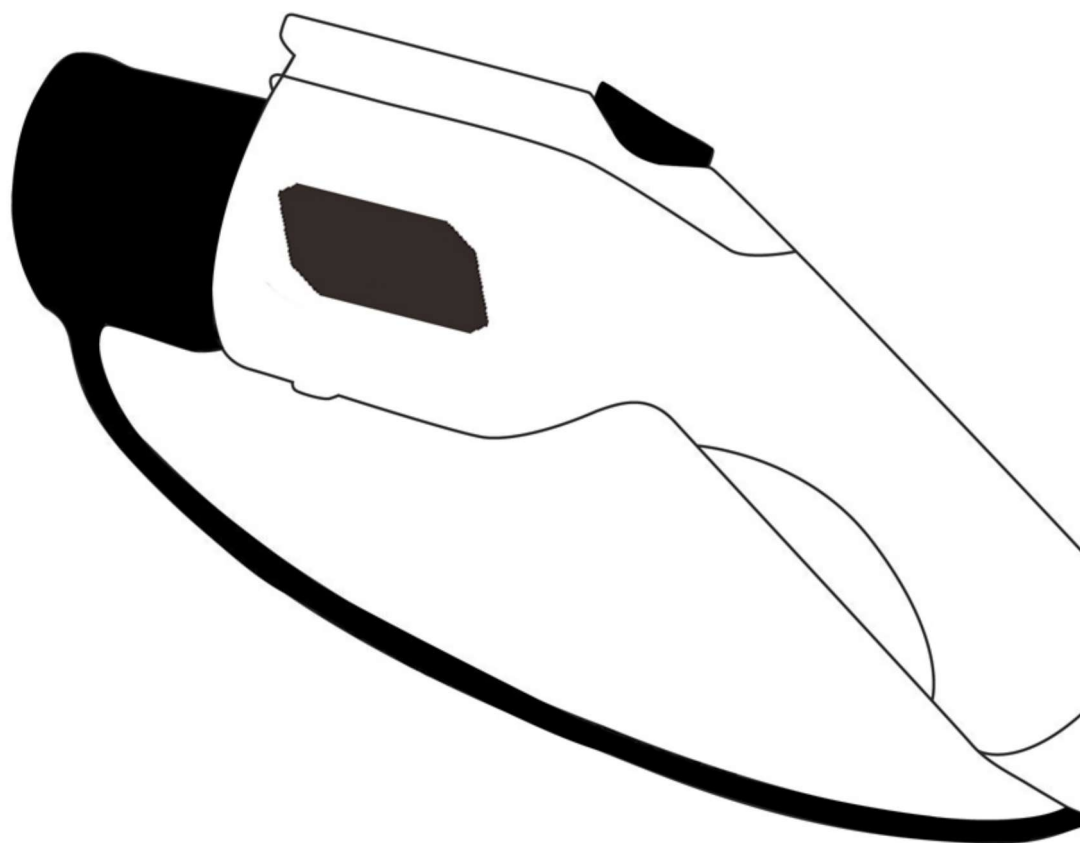


New Energy Vehicle

**Portable Charger**



Product Manual

# Content

1.Product Introduction.....	2
2.Product Specification.....	3
3.User Manual.....	4
4.Indicator Status Description.....	5
5.Product Safety.....	6
6.Cautions.....	7

# Product Introduction

## PORTABLE EV CHARGER 3.7KW|7.4KW|11KW

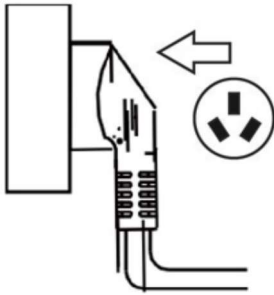


# Product Specification

Product Name	Portable EV Charger
Model	EVSEP116/132/316
Standard	IEC STANDARD(IEC62196-II)
Rated Voltage	AC240/415+/- 20%
Rated Current	8-10-13-16A/10-16-24-32A(Adjustable)
Working Temperature	-25°C TO 60°C
IP Grade	CONNECTOR-IP67, CONTROL BOX-IP54
Dimension of Control Box	190MM(LENGTH)*80MM(WIDTH)*60MM(HEIGHT)
Package	Charging connector, Product Manual, Certificates of Compliance, Warranty Card, Portable Bag

Note:The working temperature and protection level are carried out in the laboratory and there are relevant standards and time limits. Please do not test by yourself to avoid damaging the product and causing safety hazards.

# User Manual



Schuko



CEE

1. Take out the charging gun and insert the corresponding plug into the socket.

---



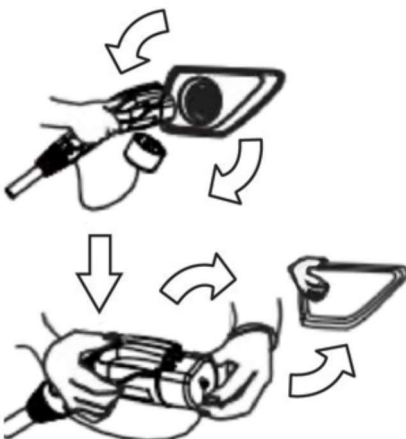
2. Press and hold the gun head unlock button, remove the gun head protective cover, and insert the gun into the slow charging (AC) charging port on the vehicle. (Note: Do not plug into the fast charge-DC charging port)

---

Charging 34°C  
216V 16 16.4A  
Power Consumption  
00.388 KW/h  
Time 00:06:46

3. Check the charging status through the display screen, and adjust the charging current according to the charging requirements (the charging status can be adjusted under the waiting state). In case of charging failure, please follow the instructions on the display to perform related operations.

---



4. After charging is complete, take out the gun head, cover the vehicle end charging port protection cover, and cover the gun head protection cover, plug the charging gun plug and store the charging device.

# Indicator Status Description

Understand the charging status through the indicator light of the control box, the specific indicator light is described as follows:

No.	Color	Status	Description
1	Green	Bright	Waiting for Charging
2	Green	Flash	Gun connected, waiting for charging
3	Green and Blue	Gradual Changing	Charging
4	Blue	Bright	Bright Charging complete
5	Red	Bright	Charging fault, Reasons please refer to the display screen

# Product Safety

## Safety Instructions

1. Please check if the charging gun is damaged before charging
2. Please check if the charging status is normal when charging
3. Please pay attention to the surrounding environment of charging (such as corrosive liquid, flammable dust or strong corrosive environment, etc.). It is forbidden to charge in this environment and keep the charging environment ventilated.
4. Do not charge outdoors in bad weather (such as typhoon, thunder and lightning, heavy rain, etc.)

## Warning

1. When using a 10A to 16A conversion plug for charging, the current must be adjusted to less than 10A, and the customer is responsible for any loss and damage caused by this.
2. It is forbidden to use it with other charging equipment (such as fast charging, small generators etc.).
3. Do not immerse the equipment in water.
4. It is forbidden to pull, drag and disassemble the charging device by yourself.
5. The use of this equipment by minors is prohibited.

## Cautions

### Cautions

- 1.Ensure that the charging equipment, charging ports, cables, control boxes, and plug surfaces are not scratched, rusted, cracked, damaged, etc.
- 2.If the surface of the socket is damaged, rusted, cracked, or the connection between the socket and the plug is loose, charging is prohibited.
- 3.When the plug is dirty or damp, please wipe it with a clean and dry cloth when the power is off to ensure that the product can charge the car normally.
- 4.Before charging, make sure that the specifications and models of the power supply end plug and the power supply end socket are consistent.

### In Charging

- 1.When charging in a crowded place, the user should try to lay the cable horizontally.
- 2.When the charging distance is too far, do not pull the cable forcefully.
- 3.Please place the cable on a flat road, and there are no sharp objects around it to avoid damage.
- 4.Please do not use this product in these surrounding environment of charging (such as corrosive liquid, flammable dust or strong corrosive environment, etc.).
- 5.In the environment of public passages, outdoor crossing sections, viaducts or underpasses, heavy vehicles should be placed under repeated rolling and protection should be done.
- 6.Because the cable itself is too heavy, please avoid hanging vertically. It will reduce the service life under external force and long-term swing.